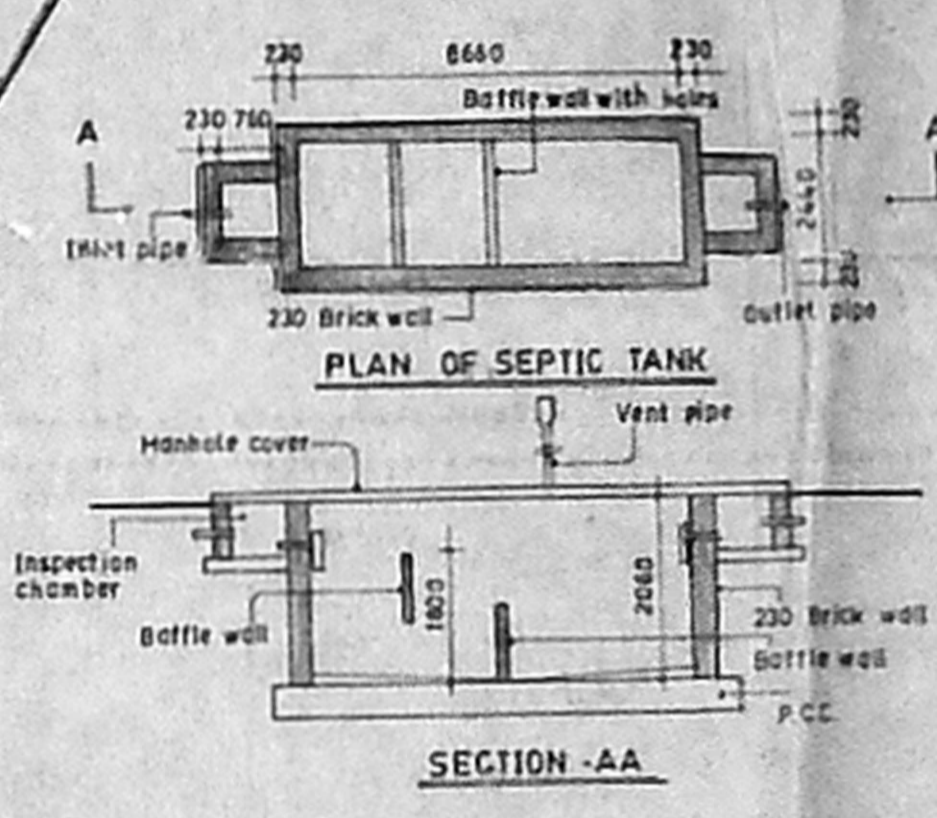
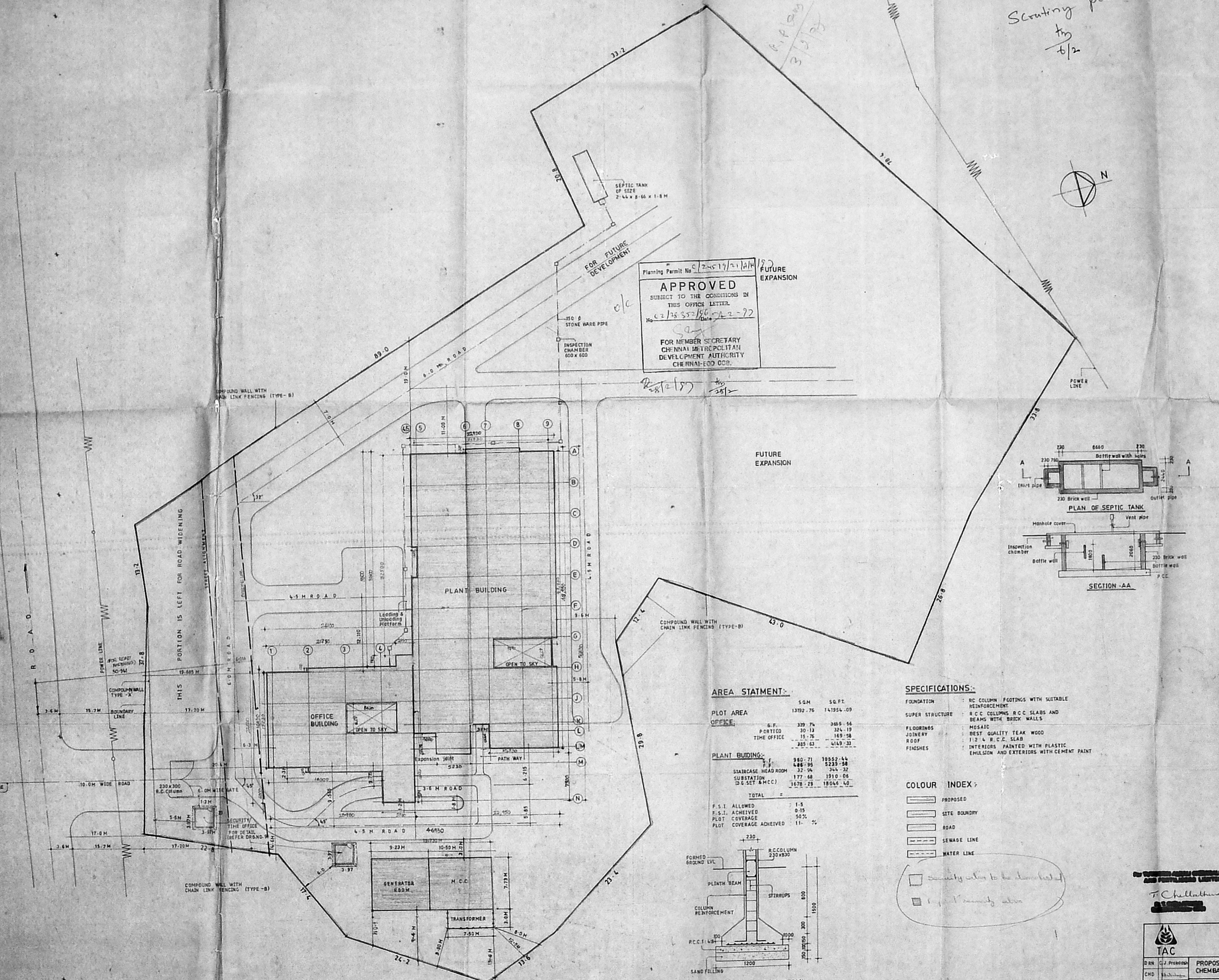


Scouting plan
 1/8
 6/2

103 XT2



Planning Permit No. 24519/21/14/182
APPROVED
 SUBJECT TO THE CONDITIONS IN THIS OFFICE LETTER.
 No. 62/2557/80-22-72
 Date 28/12/17
 FOR MEMBER SECRETARY
 CHENNAI METROPOLITAN
 DEVELOPMENT AUTHORITY
 CHENNAI-600 009.



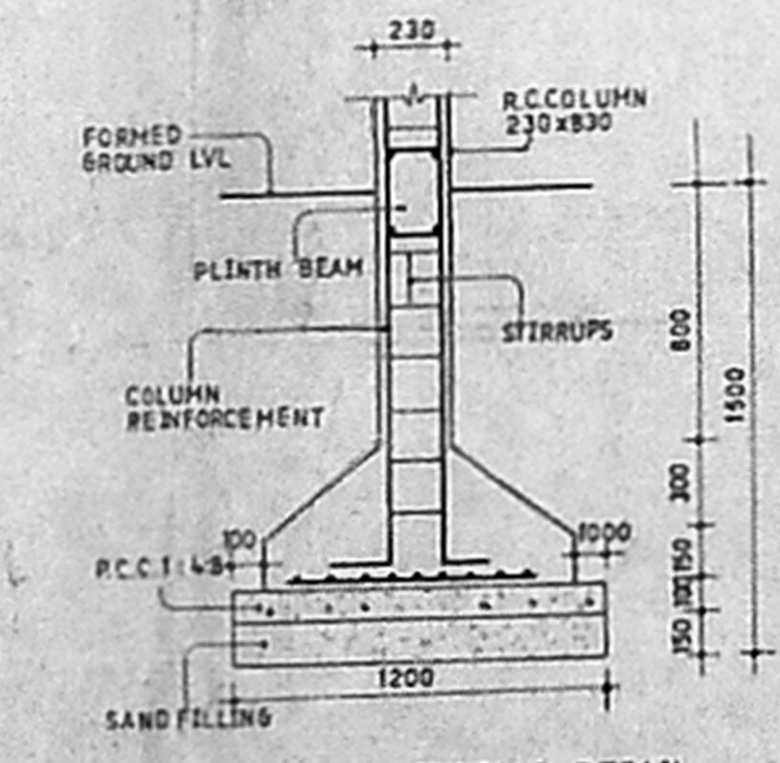
AREA STATEMENT:

	SQM	SQ. FT.
PLOT AREA	13192.76	141954.09
OFFICE:		
G.F.	329.74	3555.56
PORTICO	30.13	324.19
TIME OFFICE	15.76	169.58
TOTAL	375.63	4049.33
PLANT BUILDING:		
G.F.	980.71	10552.44
F.F.	486.95	5233.58
STAIRCASE HEAD ROOM	32.94	354.32
SUBSTATION (S.G. SET & M.C.C.)	177.68	1910.06
TOTAL	1678.28	18046.40
TOTAL		
F.S.I. ALLOWED	1.5	
F.S.I. ACHIEVED	0.15	
PLOT COVERAGE ACHIEVED	9%	
PLOT COVERAGE ACHIEVED	11%	

- SPECIFICATIONS:**
- FOUNDATION: RC COLUMN FOOTINGS WITH SUITABLE REINFORCEMENT
 - SUPER STRUCTURE: R.C.C. COLUMNS, R.C.C. SLABS AND BEAMS WITH BRICK WALLS
 - FLOORINGS: MOSAIC
 - JOINERY: BEST QUALITY TEAK WOOD
 - ROOF: 1:2 L.R.C.C. SLAB
 - FINISHES: INTERIORS PAINTED WITH PLASTIC EMULSION AND EXTERIORS WITH CEMENT PAINT

COLOUR INDEX:

- PROPOSED
 - SITE BOUNDARY
 - ROAD
 - SEWAGE LINE
 - WATER LINE
- Security wall to be demolished
- 1.5m Security wall

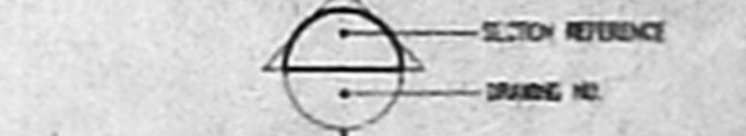


T. Chellathurai
 ARCHITECT
 P.T. KRISHNAM, M. Arch.
 REGD. No. CA/2377
 COLLEGE OF ARCHITECTURE

TUTICORIN ALKALI CHEMICALS AND FERTILISERS LTD.
 TAC
 PROPOSED BIOPESTICIDES PROJECT AT CHEMBARAMPAKKAM AT SURVEY No. 120/4, VILLAGE No. 65
 REVISED SITE PLAN
 SCALE: 1:250
 DATE: 9-2-96
 SHEET 1 OF 1
 Dwg. No. TAC / B10 / CIVIL / 01

NO.	OPENING SIZE	CASERMENT SIZE	REMARKS	QTY.
V	3570	1400	1400 x 1375	6
W1	4570	1400	1400 x 1375	1
W2	600	600	600 x 600	2
W3	600	600	600 x 600	1
W4	1670	1400	1400 x 1375	1
W5	1670	1400	1400 x 1375	1
W6	1670	1400	1400 x 1375	1
W7	3570	1300	1300 x 1275	1
W8	1670	1300	1300 x 1275	1
W9	1770	1300	1300 x 1275	1
W10	1770	1300	1300 x 1275	1
W11	1770	1300	1300 x 1275	1
W12	1770	1300	1300 x 1275	1
W13	1770	1300	1300 x 1275	1
W14	1770	1300	1300 x 1275	1
W15	1770	1300	1300 x 1275	1
W16	1770	1300	1300 x 1275	1
W17	1770	1300	1300 x 1275	1
W18	1770	1300	1300 x 1275	1
W19	1770	1300	1300 x 1275	1
W20	1770	1300	1300 x 1275	1
W21	1770	1300	1300 x 1275	1
W22	1770	1300	1300 x 1275	1
W23	1770	1300	1300 x 1275	1
W24	1770	1300	1300 x 1275	1
W25	1770	1300	1300 x 1275	1
W26	1770	1300	1300 x 1275	1
W27	1770	1300	1300 x 1275	1
W28	1770	1300	1300 x 1275	1
W29	1770	1300	1300 x 1275	1
W30	1770	1300	1300 x 1275	1
W31	1770	1300	1300 x 1275	1
W32	1770	1300	1300 x 1275	1
W33	1770	1300	1300 x 1275	1
W34	1770	1300	1300 x 1275	1
W35	1770	1300	1300 x 1275	1
W36	1770	1300	1300 x 1275	1
W37	1770	1300	1300 x 1275	1
W38	1770	1300	1300 x 1275	1
W39	1770	1300	1300 x 1275	1
W40	1770	1300	1300 x 1275	1
W41	1770	1300	1300 x 1275	1
W42	1770	1300	1300 x 1275	1
W43	1770	1300	1300 x 1275	1
W44	1770	1300	1300 x 1275	1
W45	1770	1300	1300 x 1275	1
W46	1770	1300	1300 x 1275	1
W47	1770	1300	1300 x 1275	1
W48	1770	1300	1300 x 1275	1
W49	1770	1300	1300 x 1275	1
W50	1770	1300	1300 x 1275	1
W51	1770	1300	1300 x 1275	1
W52	1770	1300	1300 x 1275	1
W53	1770	1300	1300 x 1275	1
W54	1770	1300	1300 x 1275	1
W55	1770	1300	1300 x 1275	1
W56	1770	1300	1300 x 1275	1
W57	1770	1300	1300 x 1275	1
W58	1770	1300	1300 x 1275	1
W59	1770	1300	1300 x 1275	1
W60	1770	1300	1300 x 1275	1
W61	1770	1300	1300 x 1275	1
W62	1770	1300	1300 x 1275	1
W63	1770	1300	1300 x 1275	1
W64	1770	1300	1300 x 1275	1
W65	1770	1300	1300 x 1275	1
W66	1770	1300	1300 x 1275	1
W67	1770	1300	1300 x 1275	1
W68	1770	1300	1300 x 1275	1
W69	1770	1300	1300 x 1275	1
W70	1770	1300	1300 x 1275	1
W71	1770	1300	1300 x 1275	1
W72	1770	1300	1300 x 1275	1
W73	1770	1300	1300 x 1275	1
W74	1770	1300	1300 x 1275	1
W75	1770	1300	1300 x 1275	1
W76	1770	1300	1300 x 1275	1
W77	1770	1300	1300 x 1275	1
W78	1770	1300	1300 x 1275	1
W79	1770	1300	1300 x 1275	1
W80	1770	1300	1300 x 1275	1
W81	1770	1300	1300 x 1275	1
W82	1770	1300	1300 x 1275	1
W83	1770	1300	1300 x 1275	1
W84	1770	1300	1300 x 1275	1
W85	1770	1300	1300 x 1275	1
W86	1770	1300	1300 x 1275	1
W87	1770	1300	1300 x 1275	1
W88	1770	1300	1300 x 1275	1
W89	1770	1300	1300 x 1275	1
W90	1770	1300	1300 x 1275	1
W91	1770	1300	1300 x 1275	1
W92	1770	1300	1300 x 1275	1
W93	1770	1300	1300 x 1275	1
W94	1770	1300	1300 x 1275	1
W95	1770	1300	1300 x 1275	1
W96	1770	1300	1300 x 1275	1
W97	1770	1300	1300 x 1275	1
W98	1770	1300	1300 x 1275	1
W99	1770	1300	1300 x 1275	1
W100	1770	1300	1300 x 1275	1

REFERENCE
 CM - CEMENT MORTAR SIKKING
 CPU - CEMENT MORTAR SIKKING WITH POLYURETHANE FINISH
 CT - R-STILE / SANDWICH (Terrazzo colour)
 G - GRIND FLOORING
 GPU - GRIND FLOORING WITH POLYURETHANE FINISH
 QT - GLAZED TILE DADO (545 Summary Pictorial 1st)
 PP - PLASTERED & PAINTED



NO.	DESCRIPTION	DATE	BY
1	OFFICE AREA ONLY REVISED & L.A. PLAN BY OFFICE ARCHITECTS	20.10.84	
2	REVISIONS		
3	REVISIONS		
4	REVISIONS		
5	REVISIONS		
6	REVISIONS		
7	REVISIONS		
8	REVISIONS		
9	REVISIONS		
10	REVISIONS		
11	REVISIONS		
12	REVISIONS		
13	REVISIONS		
14	REVISIONS		
15	REVISIONS		
16	REVISIONS		
17	REVISIONS		
18	REVISIONS		
19	REVISIONS		
20	REVISIONS		
21	REVISIONS		
22	REVISIONS		
23	REVISIONS		
24	REVISIONS		
25	REVISIONS		
26	REVISIONS		
27	REVISIONS		
28	REVISIONS		
29	REVISIONS		
30	REVISIONS		
31	REVISIONS		
32	REVISIONS		
33	REVISIONS		
34	REVISIONS		
35	REVISIONS		
36	REVISIONS		
37	REVISIONS		
38	REVISIONS		
39	REVISIONS		
40	REVISIONS		
41	REVISIONS		
42	REVISIONS		
43	REVISIONS		
44	REVISIONS		
45	REVISIONS		
46	REVISIONS		
47	REVISIONS		
48	REVISIONS		
49	REVISIONS		
50	REVISIONS		

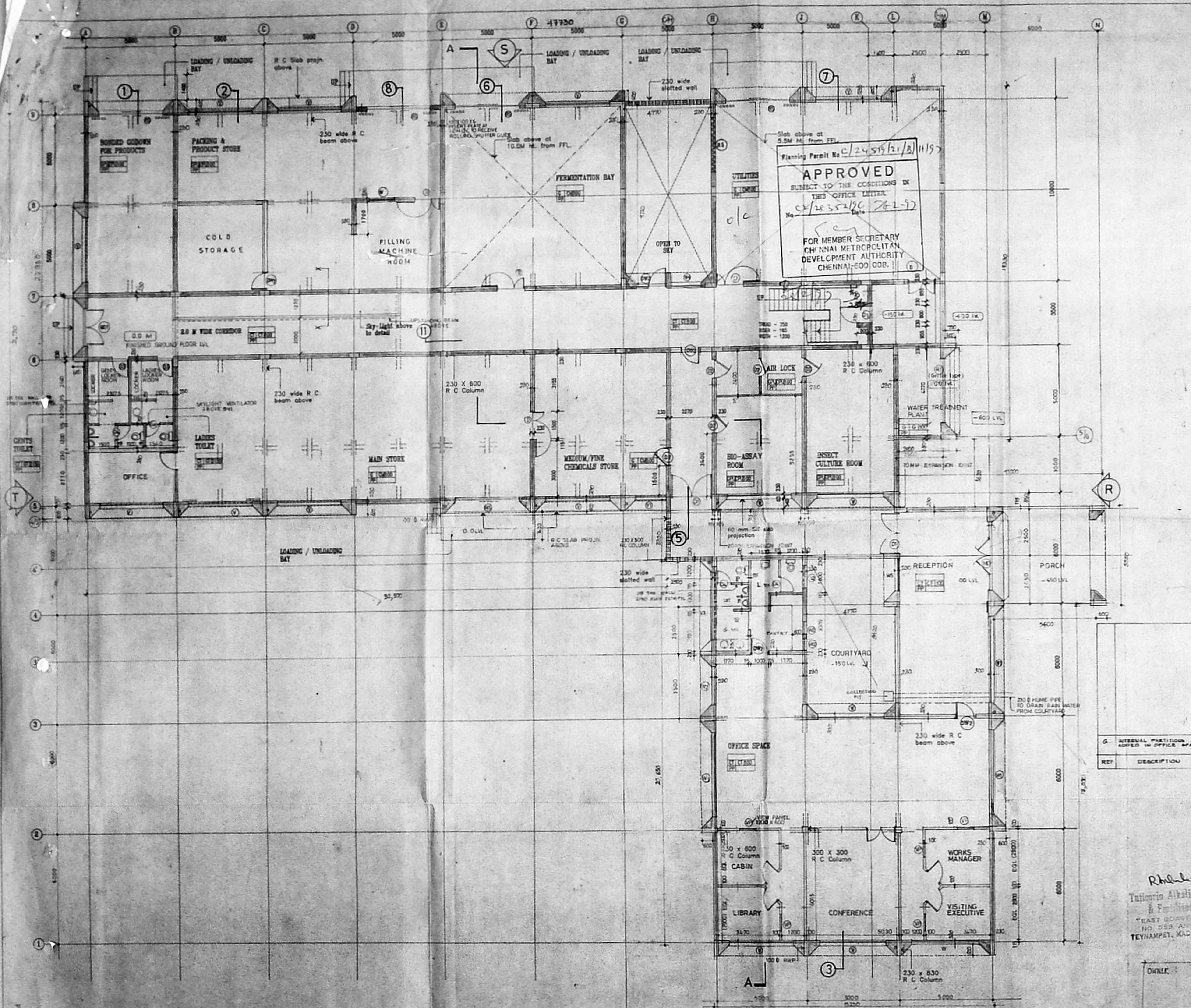
TUTICORIN ALKALI CHEMICALS & FERTILISERS LTD.

PROPOSED BIOPESTICIDES PROJECT AT CHEMBARAMPAKKAM

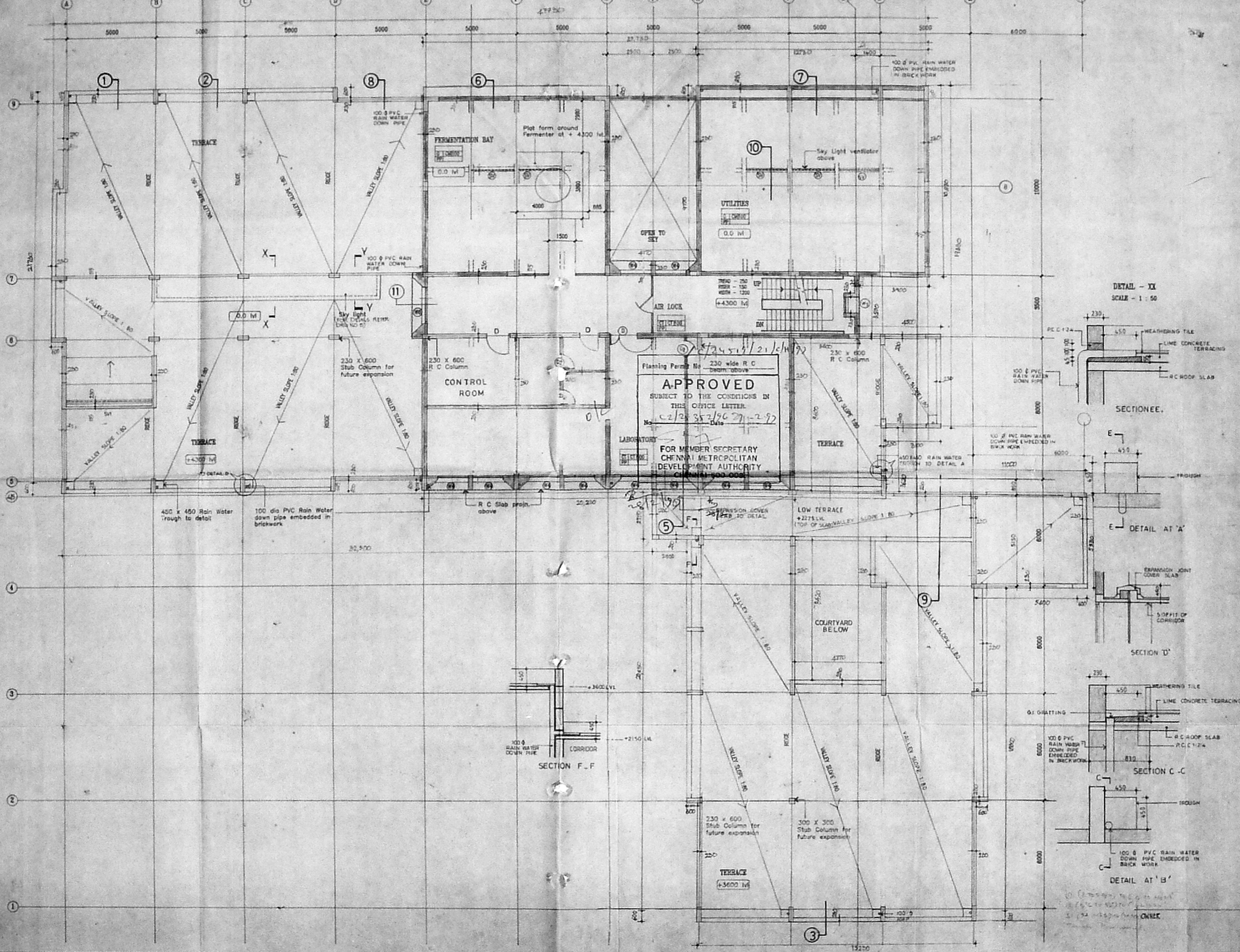
GROUND FLOOR PLAN
 SCALE: 1:100
 DATE: 20.10.84

P. T. KRISHNAN
 ARCHITECT
 1, SIDDHARTHA STREET,
 WALLACE GARIBY, MADRAS-600 014

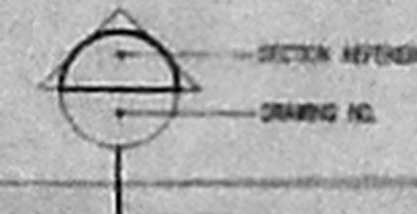
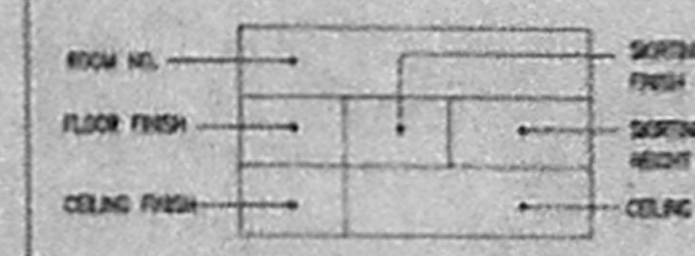
OWNER	DESIGN	CHECK	JOB NO.	DWG NO.
			326	1P



91.5 x 56.5
 R. Plan
 1/6/70
 3/8



REFERENCE
 CM - CEMENT MORTAR SIKING
 CT - RESTRE / SANDMORTAR (Terrazzo color)
 S - SAND FLOORING
 GT - GLAZED TILE SAND (Svt Somay Pilkington Tile)
 PP - PLASTERED & PAINTED



FOR TUTORIN ALKALI CHEMICALS AND FERTILISERS LIMITED

T. Chellathur
 Dr. T. CHELLATHUR
 Executive Director (1983)

P.T. KRISHNAN, M. Arch.
 REG. NO. CA/75/777
 COUNCIL OF ARCHITECTURE

REF.	DESCRIPTION	DATE	BY
A	OFFICE AREA TAKEKAL PLUMB	10.07.70	M.D.
B	WALL SECTIONS TAKEKAL	10.08.70	M.D.
C	THE WORK TAKEKAL	10.09.70	M.D.
D	UTILITIES TAKEKAL	10.10.70	M.D.
E	COLUMN POSITIONS REVISED	7.03.71	M.D.
F	EXPANSION JOINTS, COLUMNS IN GRID	30.03.71	M.D.

REVISIONS

TUTICORIN ALKALI CHEMICALS & FERTILISERS LTD.

PROPOSED BIOPESTICIDES PROJECT AT CHEMBARAMPARKAM SURBY NO 1204, ELLAKKAL 60

FIRST FLOOR PLAN

SCALE: 1:100 DATE: 22 AUG 74

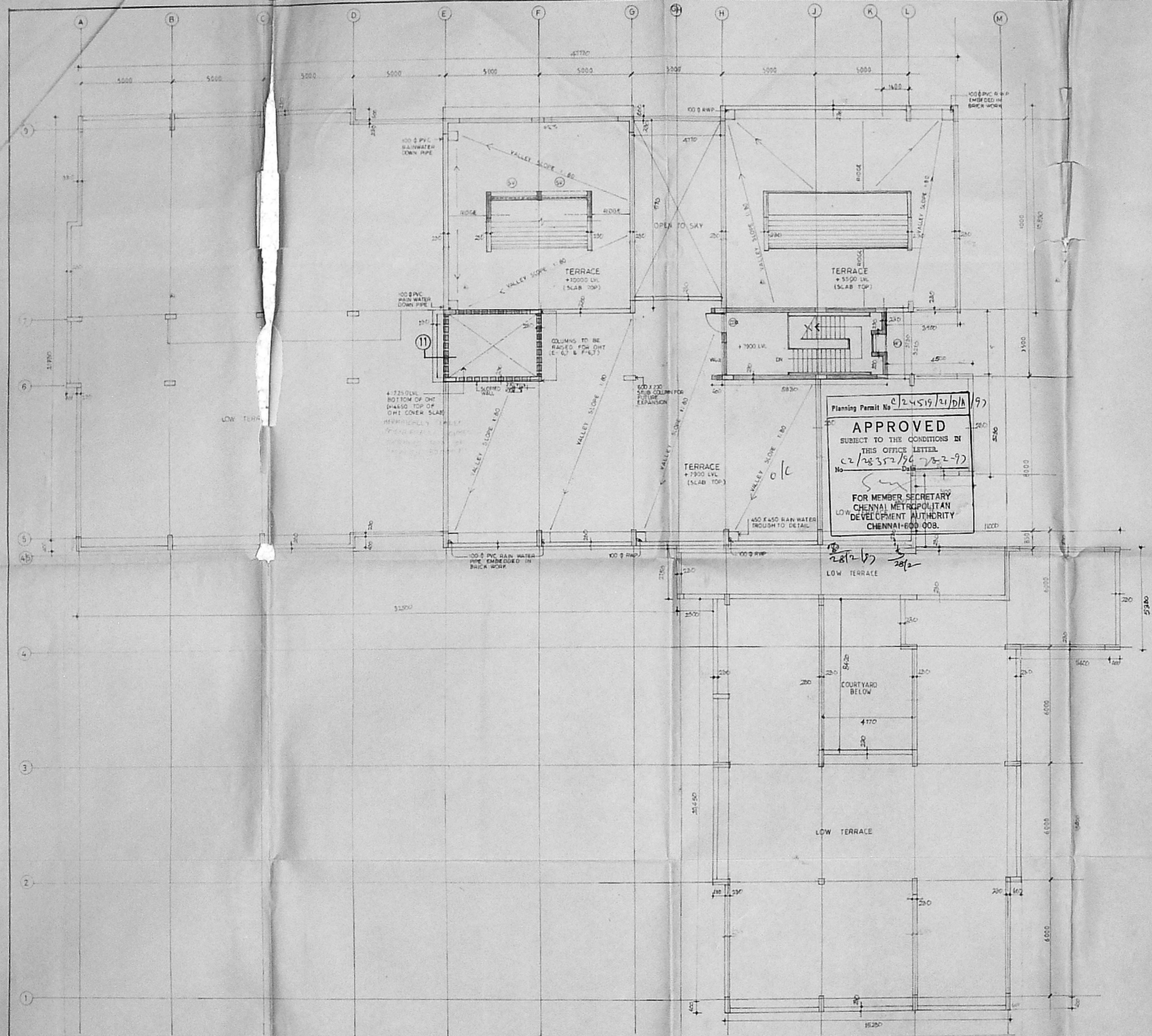
ARCHITECT:

P.T. KRISHNAN
 1, SECOND STREET,
 VALLACK GARDEN, MADRAS-600,005

DRWN	CHD.	JOB NO.	DWG NO.
		326	2b

MMDA 'G' / PP NO. 7
 C.No. _____
 Asst. _____
 Scrutiny: _____
 PART I _____
 PART II _____
 A.P. _____ DP. _____

91 x 61.8
 21/8/96



Planning Permit No. C/24519/21/Dh/97
APPROVED
 SUBJECT TO THE CONDITIONS IN THIS OFFICE LETTER.
 No. C/28352/96/2-2-97
 Date _____
 FOR MEMBER SECRETARY
 CHENNAI METROPOLITAN
 DEVELOPMENT AUTHORITY
 CHENNAI-600 008.

REF	DESCRIPTION	DATE	SIGN
A	OFFICE AREA TERRACE REVISED	10.09.95	R.S.

TUTICORIN ALKALI CHEMICALS & FERTILISERS LTD.

PROPOSED BIOPESTICIDES PROJECT AT CHEMBARAMPAKKAM PLOT NO. 104, TRAIK NO. 67

TERRACE FLOOR PLAN
 SCALE 1:100 DATE 6.09.96

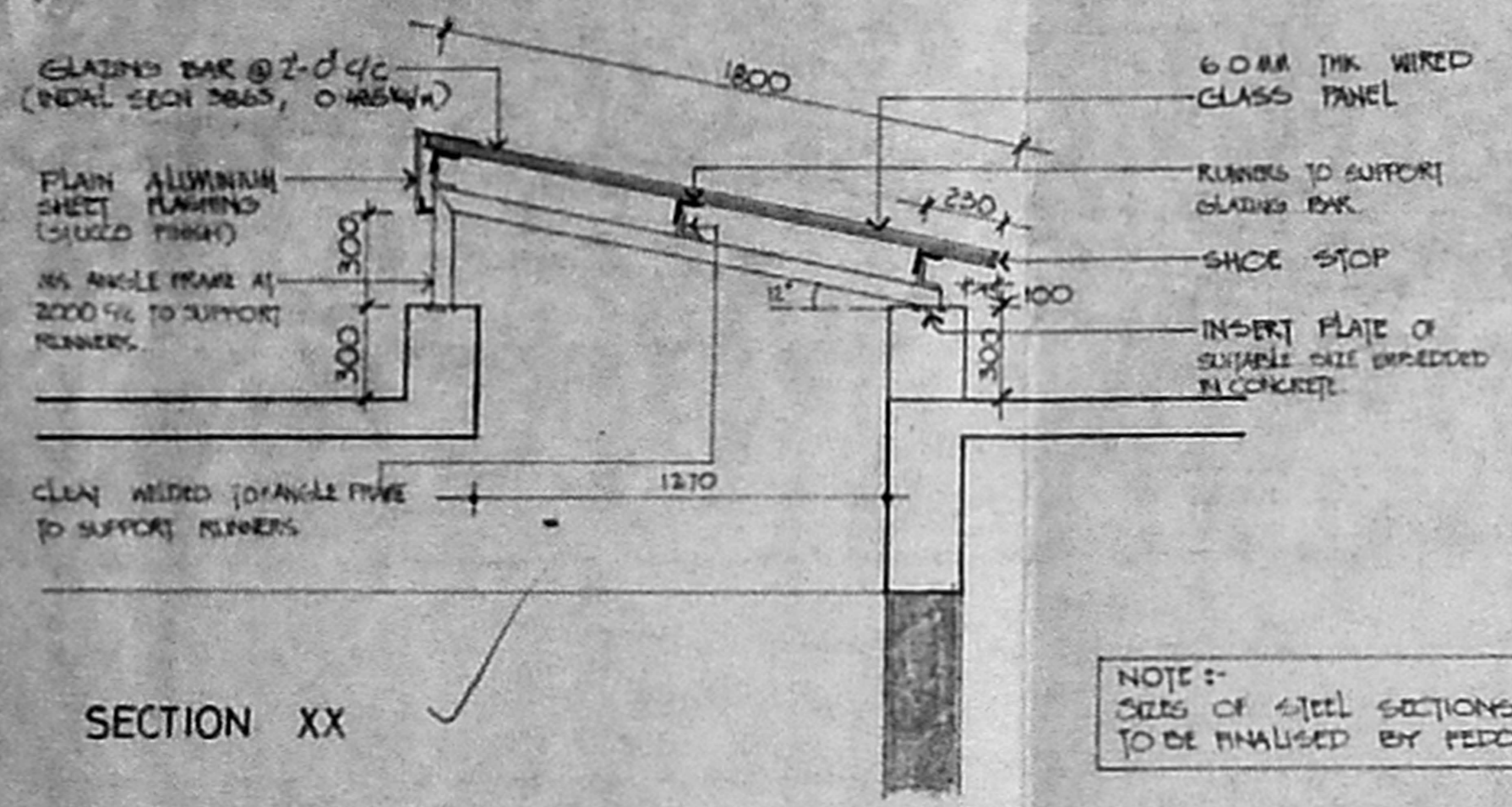
ARCHITECT: _____

P.T. KRISHNAN P.T. KRISHNAN, M. Arch.
 1, SECOND STREET, REGD. NO. CA/78/277
 WALLERS GARDEN, MADRAS - 600 004.
 COUNCIL OF ARCHITECTURE

DRAWN	CHECKED	JOB NO	DRG NO
R.S.		326	12

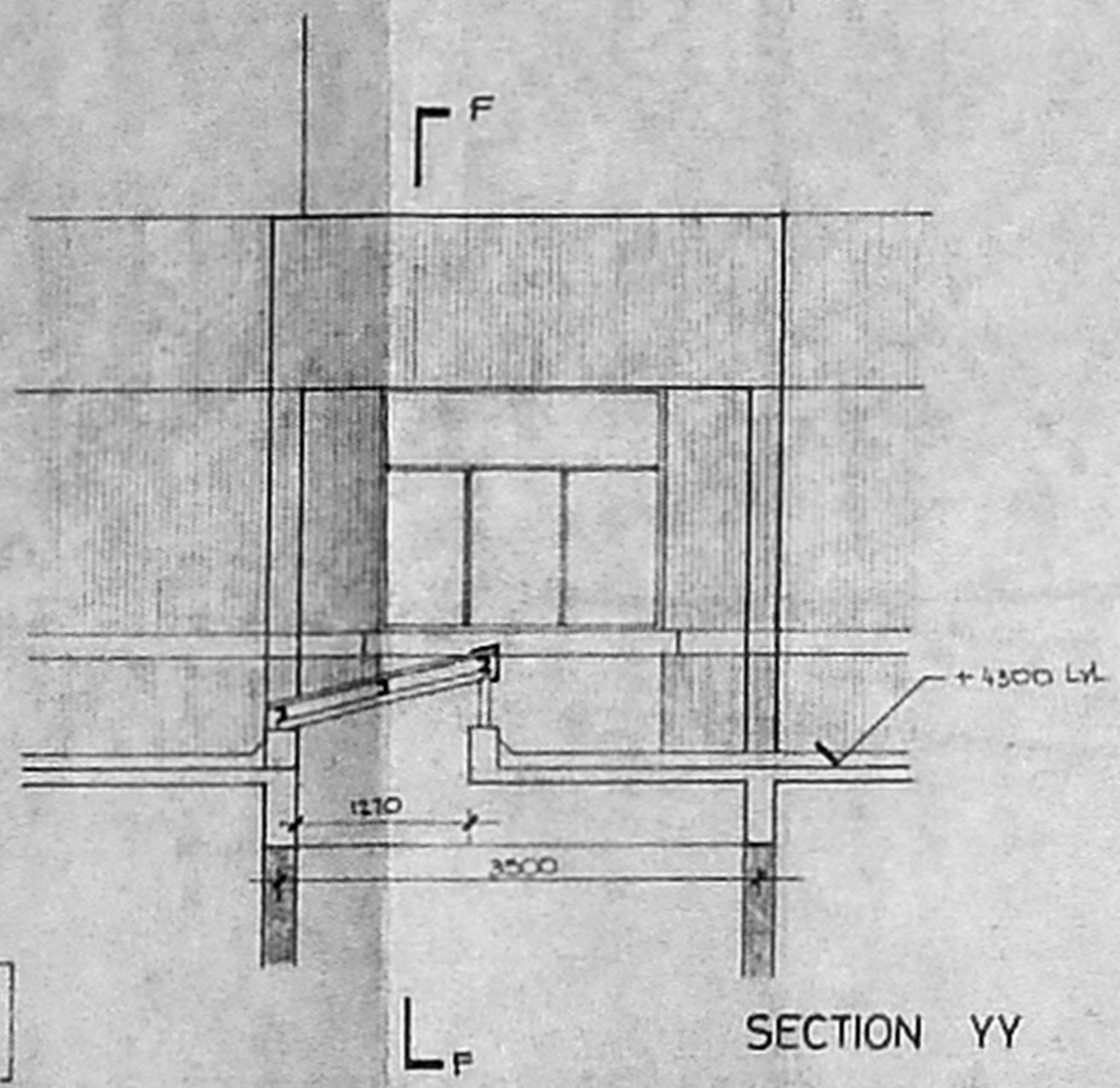
Dr. Indrago
Tuticorin Alkali Chemicals
 OWNER & FERTILISERS LTD.
 "EAST GATE" CHENNAI
 NO. 355, V.V. ROAD, AT
 TEYNAMPET, MADRAS-600 018.

77.5 x 50.5
 6
 Scouting
 Plans
 20/6/96

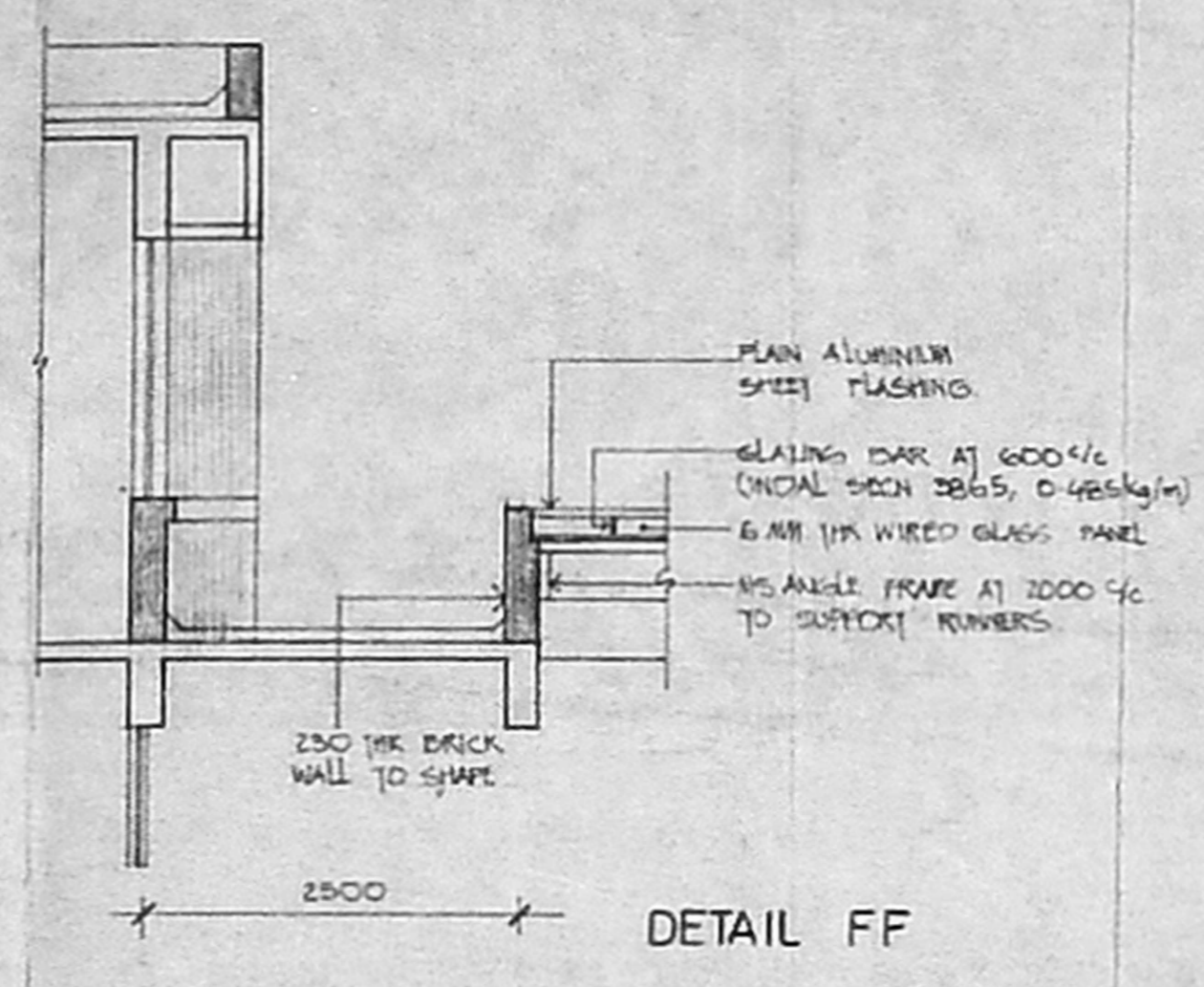


SECTION XX

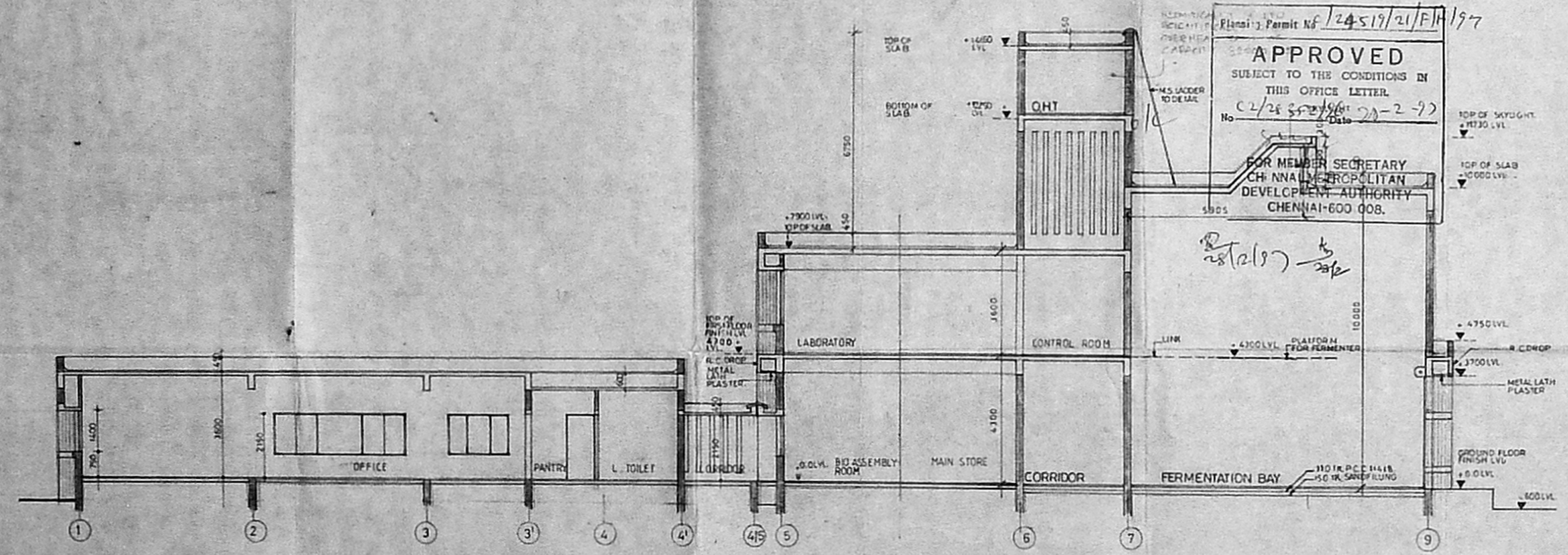
NOTE:-
 SIZES OF STEEL SECTIONS
 TO BE FINALISED BY FEED.



SECTION YY



DETAIL FF



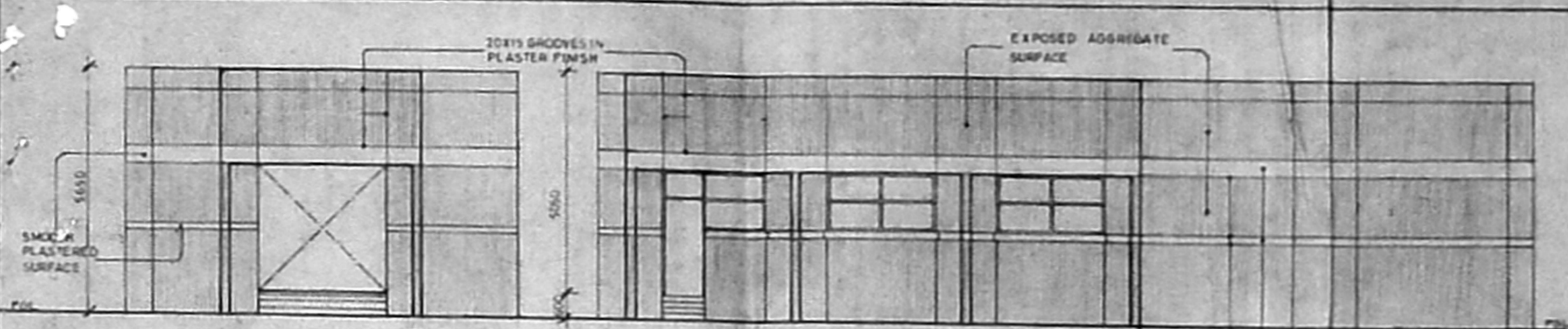
SECTION AA

Planning Permit No. 24519/21/FH/1977
APPROVED
 SUBJECT TO THE CONDITIONS IN THIS OFFICE LETTER.
 No. C2/28 352/96 Date 22-2-97
 FOR MEMBER SECRETARY
 CHENNAI METROPOLITAN
 DEVELOPMENT AUTHORITY
 CHENNAI-600 008.

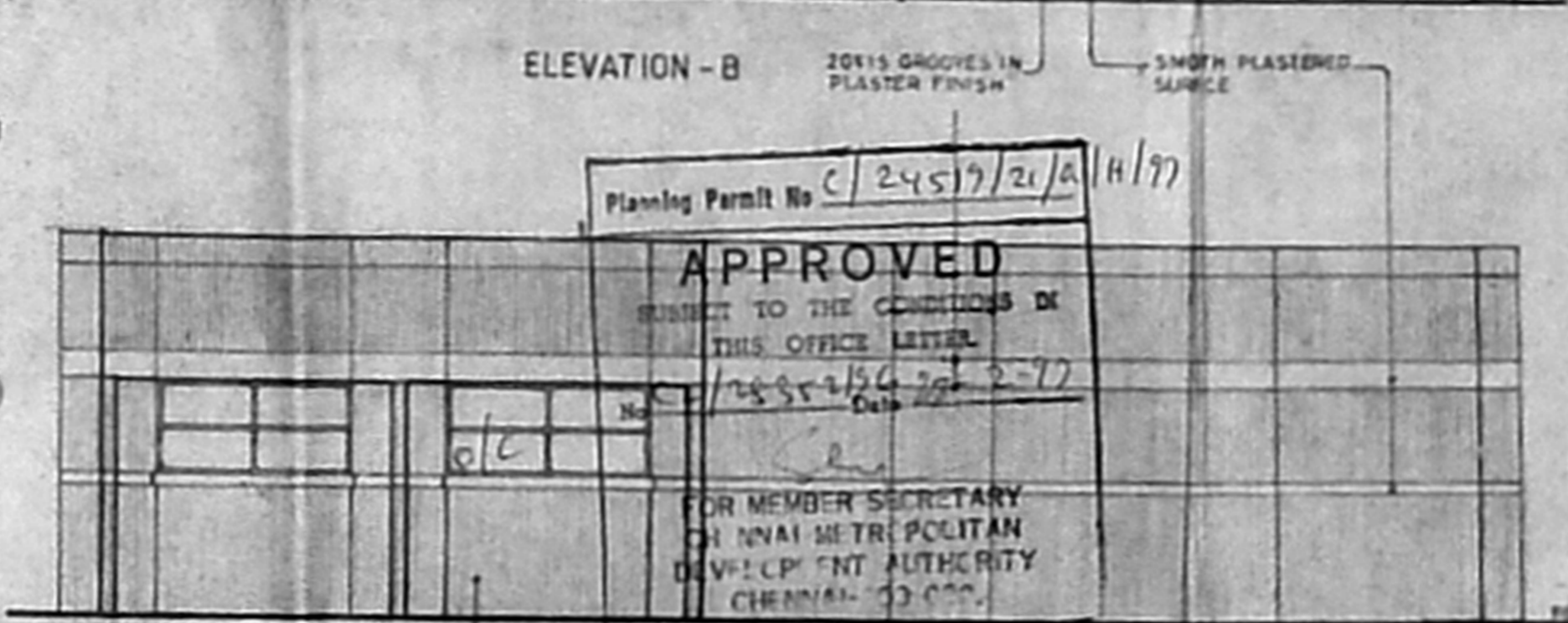
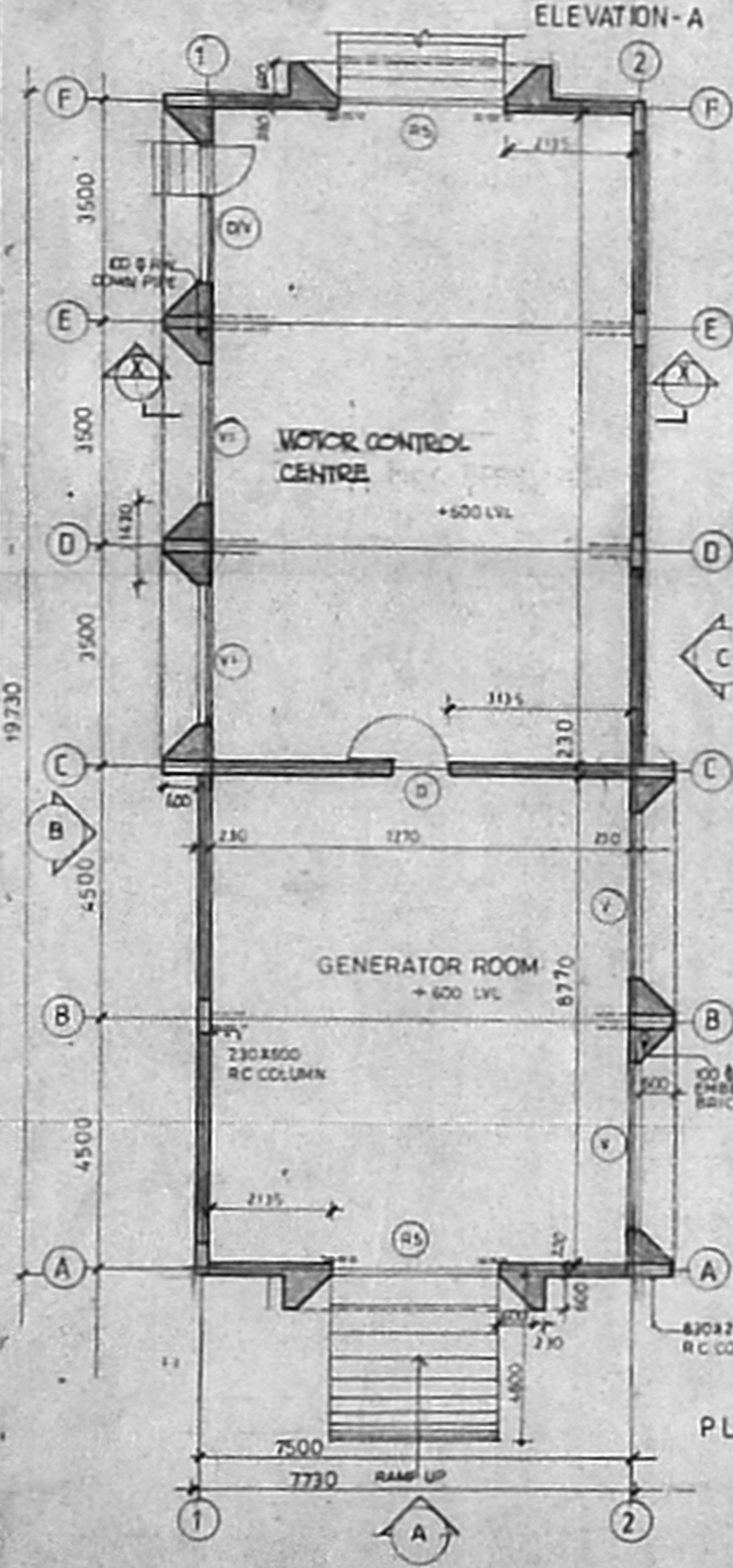
For TUTCORIN ALKALI CHEMICALS
 AND FERTILIZERS LIMITED
 S. ARUNDESI
 Sr. Manager (Admin. & Pers.)

A	SECTION AA REVISED	1.09.95	R.S.
NO.	REVISION	DATE	SIGN
TUTCORIN ALKALI CHEMICALS AND FERTILISERS LTD.			
PROPOSED BIOPESTICIDES PROJECT AT CHEMBARAMPAKKAM, DISTRICT NO. 1504, VILLAGE NO. 65.			
SECTIONS			
SCALE=1:100	DATE=23.08.94		
ARCHITECT			
P.T. KRISHNAN 1 SECOND STREET WALLACE GARDEN, MADRAS-6.			
DRAWN	CHECKED	JOB NO.	DRG. NO.
ALEX		326	5A

51x39x3



SCHEDULE OF JOINERY						
TYPE	OPENING SIZE		CASEMENT SIZE		DESCRIPTION	NO.
	WIDTH	HEIGHT	WIDTH	HEIGHT		
D	1000	2150	975	2137	NON STD STEEL CASEMENT DOOR TO DETAIL	1
DV	1070	3000	1045	2987	NON STD STEEL CASEMENT WINDOW WITH SPLIT VENTILATOR TO DETAIL	1
RS	1000	3000			ROLLING SHUTTER TO DETAIL	1
V	1070	1400	1045	1375	NON STD STEEL CASEMENT SPLIT VENTILATOR TO DETAIL	1
VI	1000	1400	1045	1375	SAME AS V	1



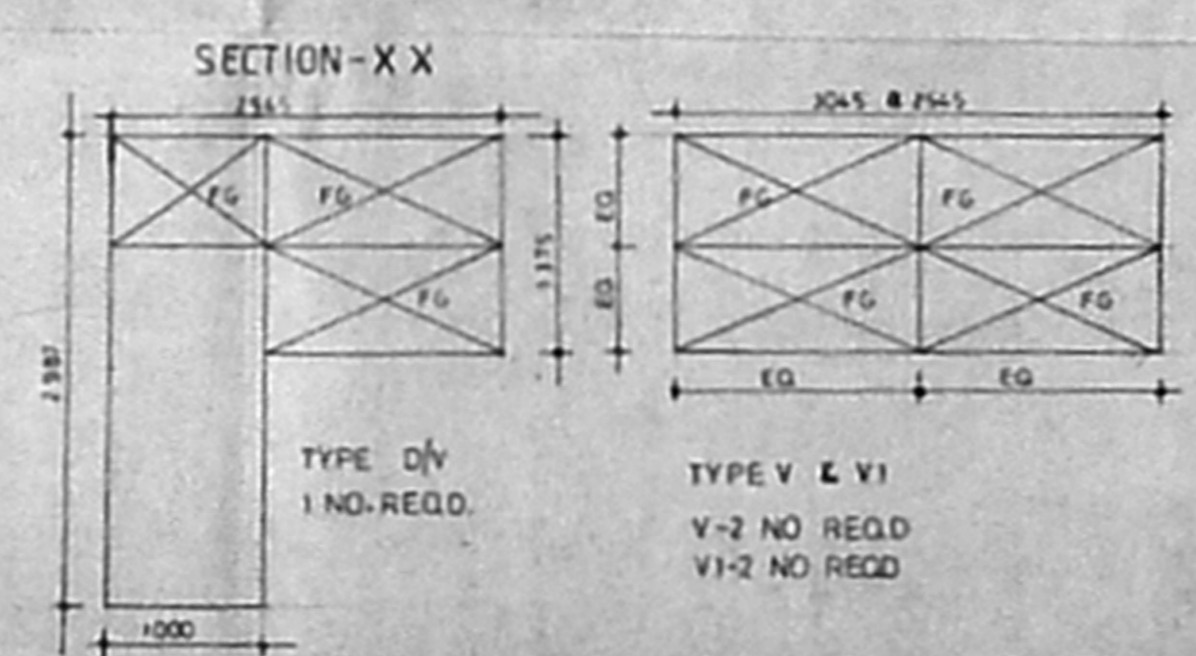
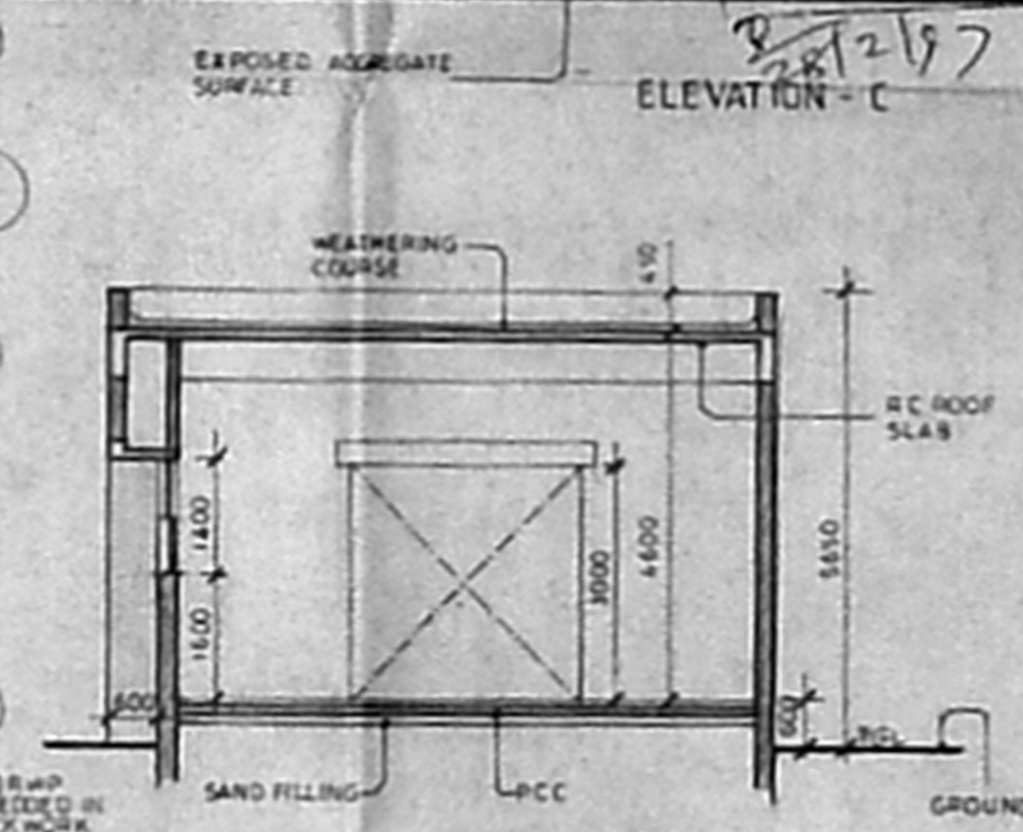
Planning Permit No C/24517/21/A/H/97

APPROVED

SUBJECT TO THE CONDITIONS OF THIS OFFICE LETTER

No. /24517/21/A/H/97 Date 28/2/97

FOR MEMBER SECRETARY
CHennai METROPOLITAN DEVELOPMENT AUTHORITY
CHENNAI-600 002.



Setting Plan

MMDA 'C' / PP No. 7

City, _____

Axis, _____

Scale: 1:100, 50

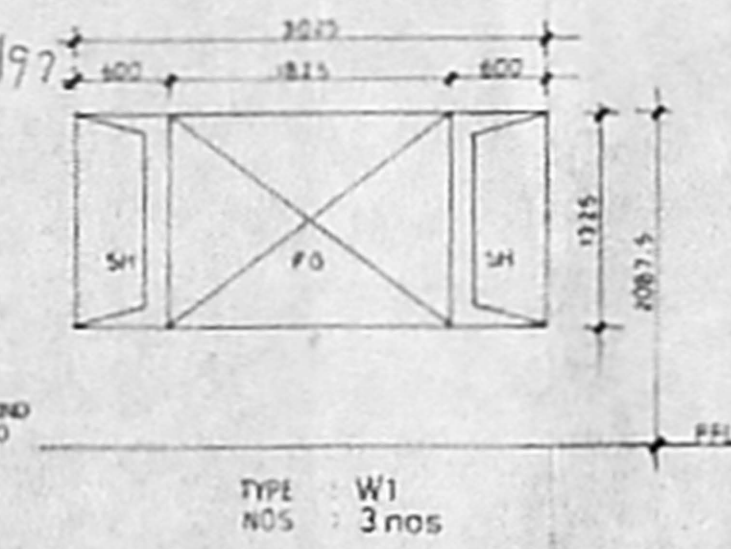
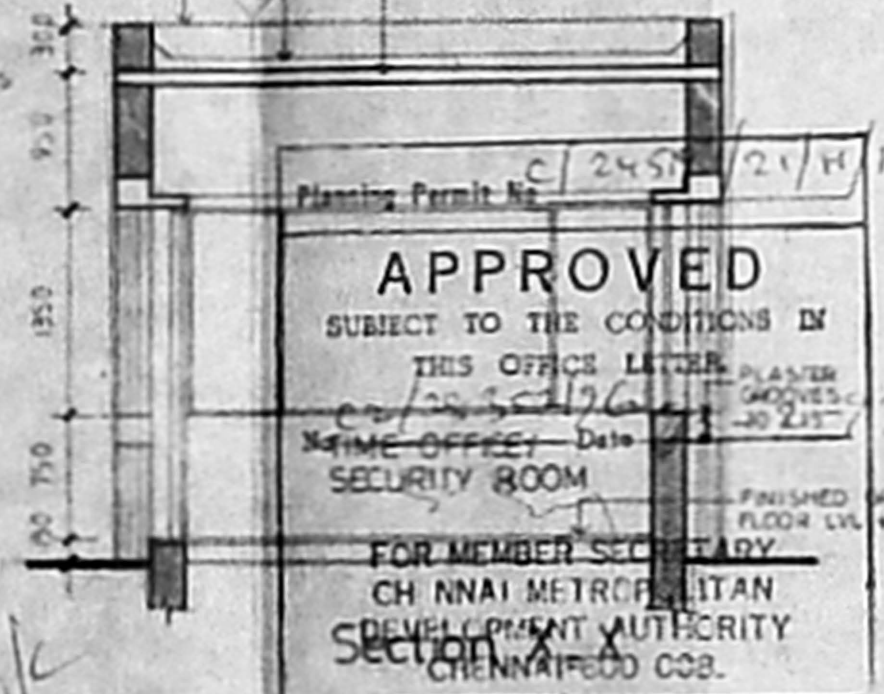
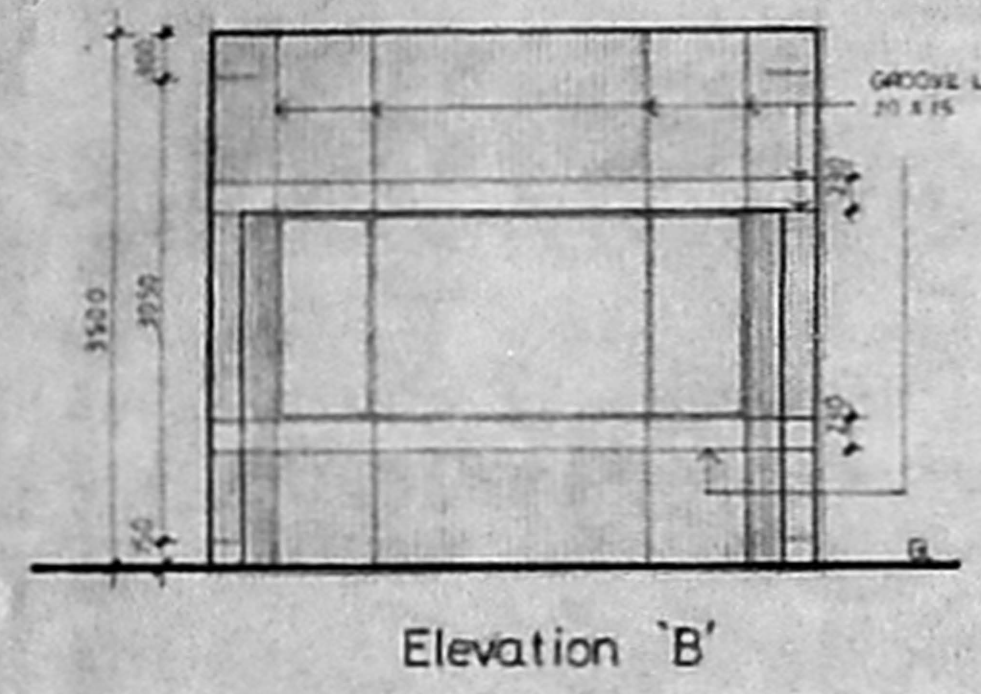
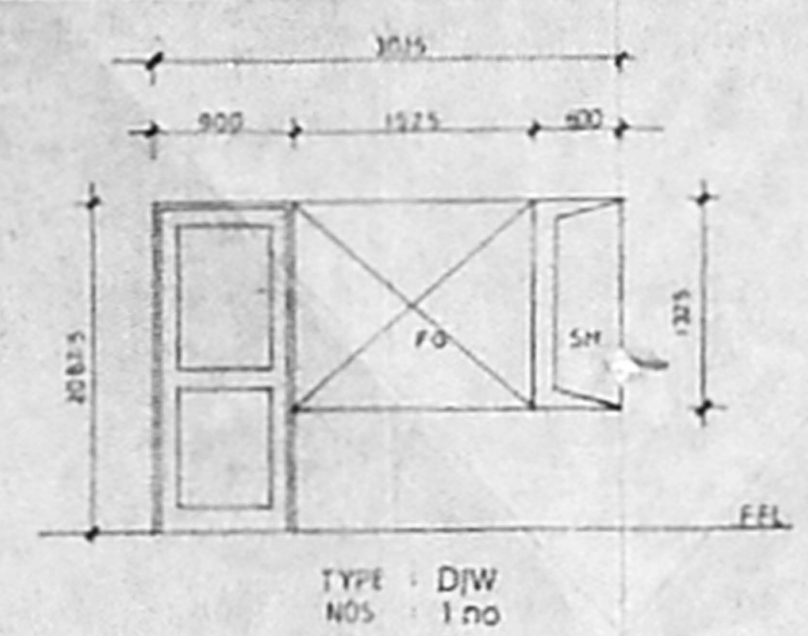
PART I

PART II

AP

R. Krishnan
Tuticorin Alkali Chemicals & Fertilisers Ltd,
"EAST COAST CENTRE"
NO 853, ANNA SALAI
TEYNAMPET, MADRAS-600 018.

REF	DESCRIPTION	DATE	SIGN
REVISIONS			
TUTICORIN ALKALI CHEMICALS AND FERTILISERS LTD.			
PROPOSED BIOPESTICIDES PROJECT AT CHEMBARAPAKKAM			
SUB STATION: MOTOR CONTROL CENTRE & GENERATOR ROOM			
PLAN ELEVATIONS AND SECTION DETAILS			
SCALE	1:100, 50	DATE	1-11-95
MMDA 'C' / PP No. 7		P. T. KRISHNAN	
City, _____		P. T. KRISHNAN, M. Arch.	
Axis, _____		REG. NO. CA/78/277	
Scale: 1:100, 50		COUNCIL OF ARCHITECTURE	
PART I		1 SECOND STREET	
PART II		WALLACE GARDEN MADRAS-600 006.	
DRAWN	CHECKED	JOB NO.	DRG NO.
BAR P.		326	16



Planning Permit No. C/2457/21/H/197

APPROVED

SUBJECT TO THE CONDITIONS IN THIS OFFICE LETTER

DATE: 28/12/97

NAME: OFFICE/ SECURITY ROOM

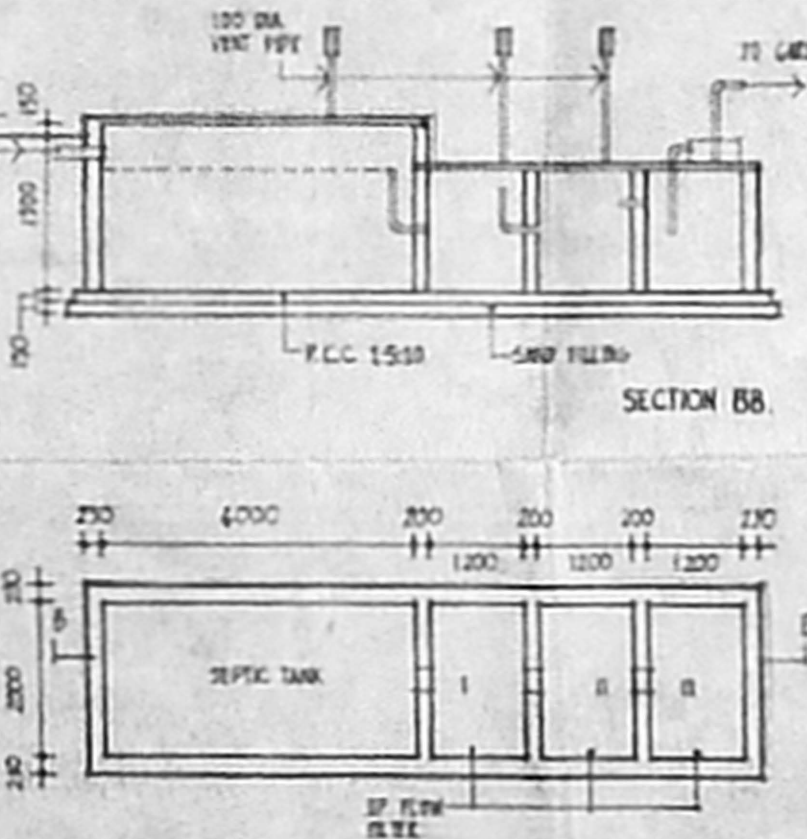
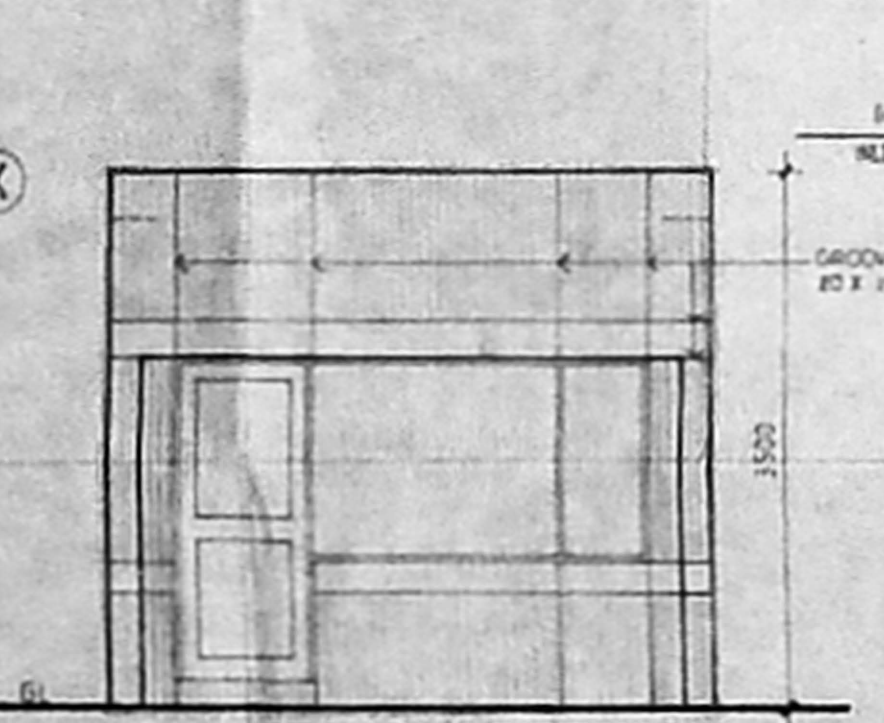
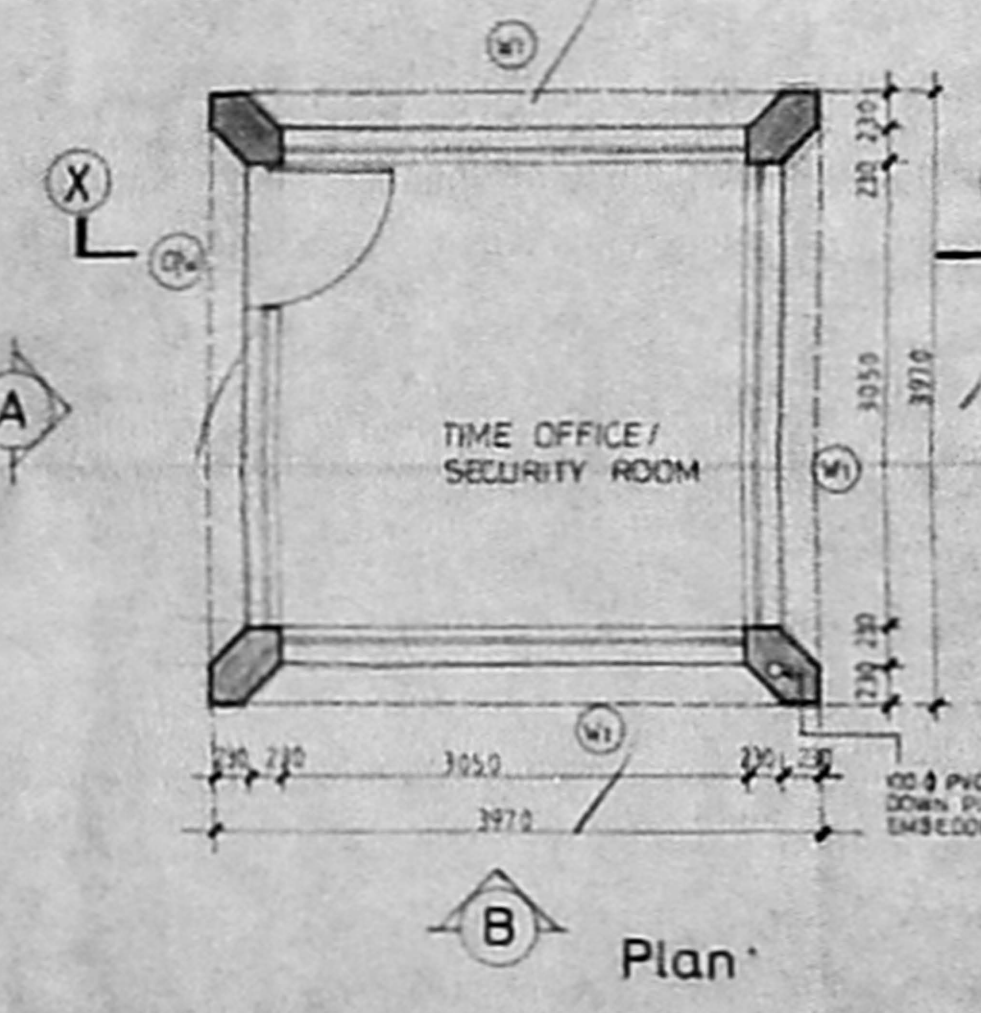
FOR MEMBER SECRETARY
CHENNAI METROPOLITAN DEVELOPMENT AUTHORITY
CHENNAI-600 008.

NOTE :

SH - SIDE HUNG SHUTTER
FG - FIXED GLAZING

ALL MEASUREMENTS ARE TO BE CHECKED AT SITE BEFORE FABRICATION.

ALL STEEL DOORS & WINDOWS DETAIL, REFER DRG NO TD-45



SCHEDULE OF JOINERY				
TYPE	OPENING SIZE (DL) (H)	CASEMENT SIZE (L) (H)	DESCRIPTION	
Djw	3050 2100	3025 2087.5	NON STANDARD STEEL CASEMENT GLAZED DOOR CUM WINDOW & FIXED GLAZING	
W1	3050 1350	3025 1325	NON STD. STEEL CASEMENT GLAZED WINDOW & FIXED GLAZING	

NO	REVISION	DATE	SIGN

TUTICORIN ALKALI CHEMICALS & FERTILISERS LTD.

PROPOSED BIOPESTICIDES PROJECT AT CHEMBARAMPAKKAM, STREET NO 12/14, VILLAGEND 67

TIME OFFICE/ SECURITY ROOM & SCHEDULE OF JOINERY

SCALE : 1:50 DATE : 10.10.94

ARCHITECT

P. Krishnan

P.T. KRISHNAN P.T. KRISHNAN, M. Arch.
REGD. No. CA/75/277
COUNCIL OF ARCHITECTURE

14, SECOND STREET, WALLACE GARDEN, MADRAS 600 006.

DRAN	CHECKED	JOB NO	DRG-NO
R.S		326	9